



color and write

W

w



X

x





color and write

Yy



Zz



Tracing lines for uppercase Y and lowercase y.

Tracing lines for uppercase Z and lowercase z.

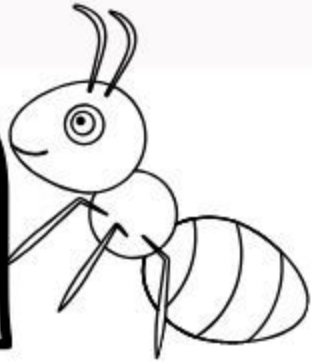
Tracing lines for uppercase Y and lowercase y.

Tracing lines for uppercase Z and lowercase z.



A

a



Bb



Tracing lines for uppercase letter A, consisting of ten horizontal dashed lines.

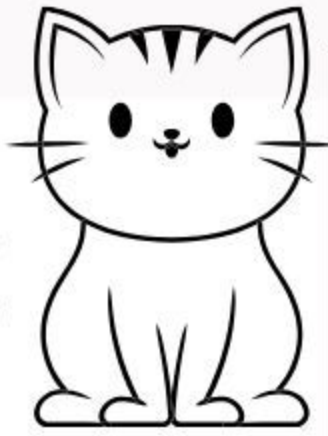
Tracing lines for lowercase letter a, consisting of ten horizontal dashed lines.

Tracing lines for uppercase letter B, consisting of ten horizontal dashed lines.

Tracing lines for lowercase letter b, consisting of ten horizontal dashed lines.



C c



D d



Tracing lines for uppercase C: ten horizontal dashed lines.

Vertical line separating the C and D sections.

Tracing lines for lowercase c: ten horizontal dashed lines.

Vertical line separating the C and D sections.

Tracing lines for uppercase D: ten horizontal dashed lines.

Vertical line separating the D and d sections.

Tracing lines for lowercase d: ten horizontal dashed lines.



color and write

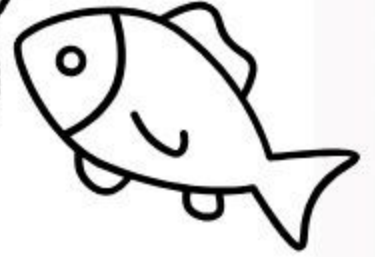
E

e



F

f





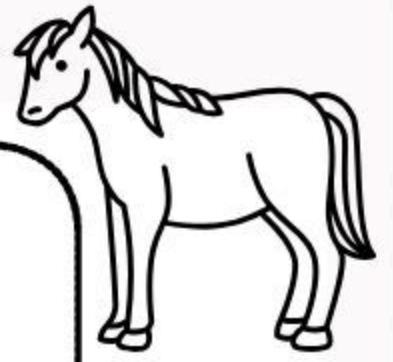
color and write

G

g



Hh



Tracing lines for uppercase letter G, consisting of ten horizontal dashed lines.

Tracing lines for lowercase letter g, consisting of ten horizontal dashed lines.

Tracing lines for uppercase letter H, consisting of ten horizontal dashed lines.

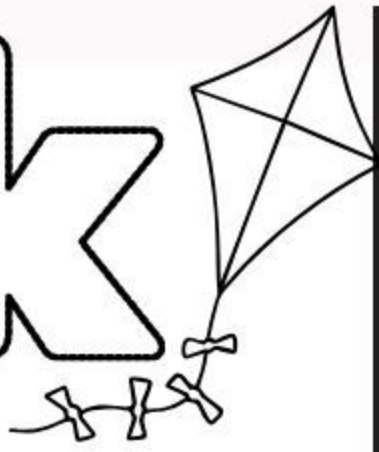
Tracing lines for lowercase letter h, consisting of ten horizontal dashed lines.



color and write

K

k



Tracing practice lines for uppercase letter K, consisting of ten horizontal dashed lines.

Tracing practice lines for lowercase letter k, consisting of ten horizontal dashed lines.

L

l



Tracing practice lines for uppercase letter L, consisting of ten horizontal dashed lines.

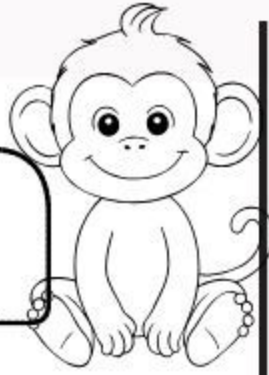
Tracing practice lines for lowercase letter l, consisting of ten horizontal dashed lines.



color and write

M

m



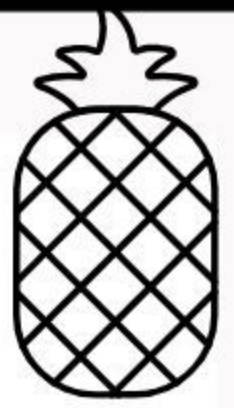
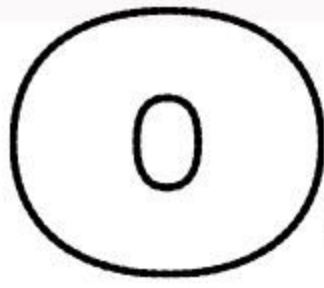
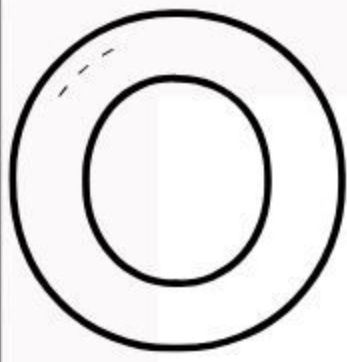
N

n



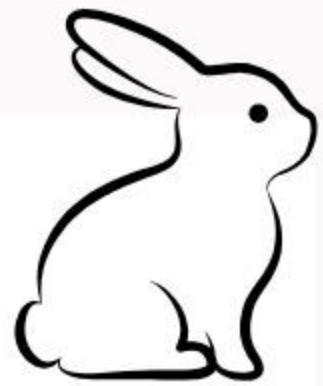


color and write





color and write





color and write