



A T



H G



T M



J K



L F



V C



A B



H R



J O



Choose the correct letter



---

---



---

---



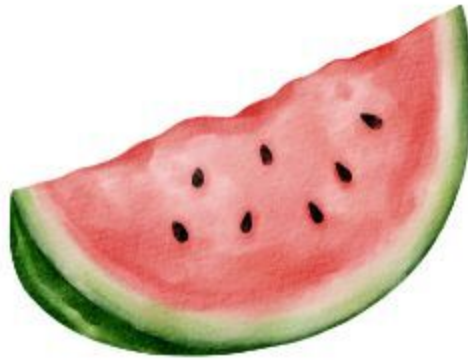
---

---



---

---



---

---



---

---



---

---



---

---



---

---



**write the name of each of the following**

# BIG OR SMALL

**BIG**



**SMALL**



**BIG**



**SMALL**



**BIG**



**SMALL**



**BIG**



**SMALL**



**BIG**



**CIRCLE THE CORRECT ANSWER**



MATCH



Birds

Fish

Insects

Animals

r e g n e

-----



y l w e l o

-----



l e b u

-----



u r p e l p

-----



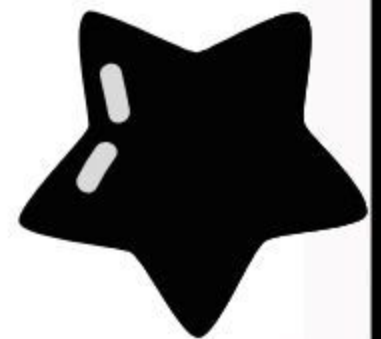
e r d

-----



l a b k c

-----



r e g n e

-----



y l w e l o

-----



l e b u

-----



u r p e l p

-----



e r d

-----



l a b k c

-----





A

An



A

An



A

An



A

An



A

An



Choose ( a ) or ( an )



write each name



n p i k

-----



a g y r

-----



r n a o g e

-----



u e l b

-----



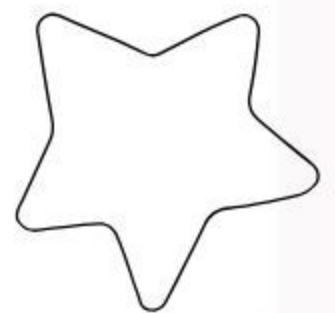
w r b o n

-----



h i w e t

-----



# Arrange letters



**WRITE THE FIRST LETTER OF EACH**



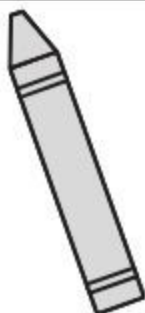
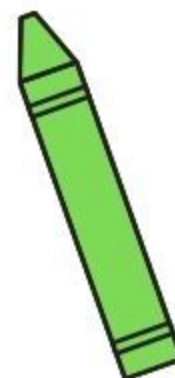
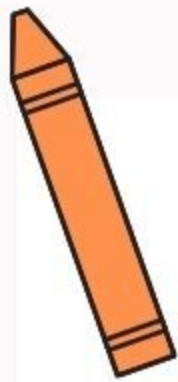
# MY FAMILY



write my family members name



Write the name of each



**WRITE EACH COLOR NAME**



Pencil - book



Pen-hen



Van - can



Orange red



Cheese -milk



Bee- butterfly



Tree-palm



Lion-elephant



Sun - moon



Shoes - shirt



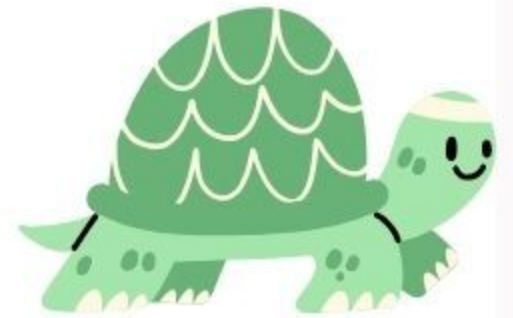
Giraffe - lion



Bear -dear



Choose the correct answer

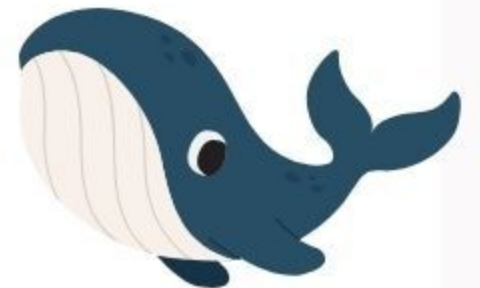


Write the first letter of each



Write the first letter of each





Write the name of each



Blank label for the turtle.



Blank label for the cardboard box.



Blank label for the ham.



Blank label for the bottle.



Blank label for the speedboat.



Blank label for the zebra.



Blank label for the girl.



Blank label for the chair.



Blank label for the candy.



Blank label for the socks.



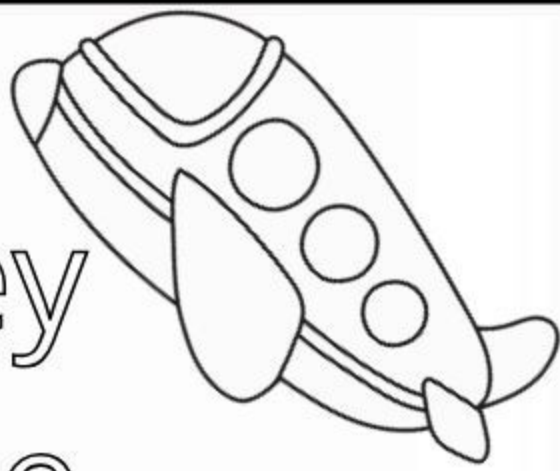
Blank label for the car.



Blank label for the grapes.



Write the first letter of each



Honey  
Plane



Flag  
Monkey

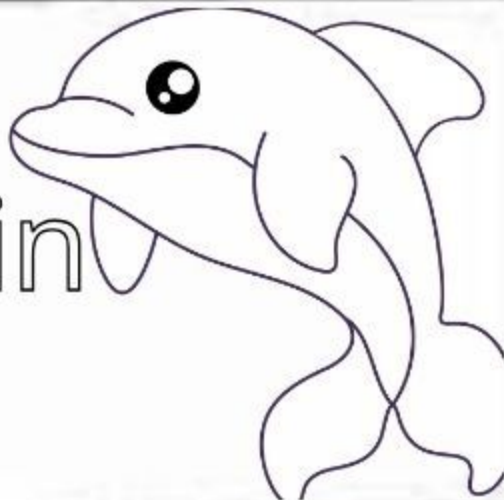
Sun  
Boy



Bag  
Hen



Dolphin  
Doll



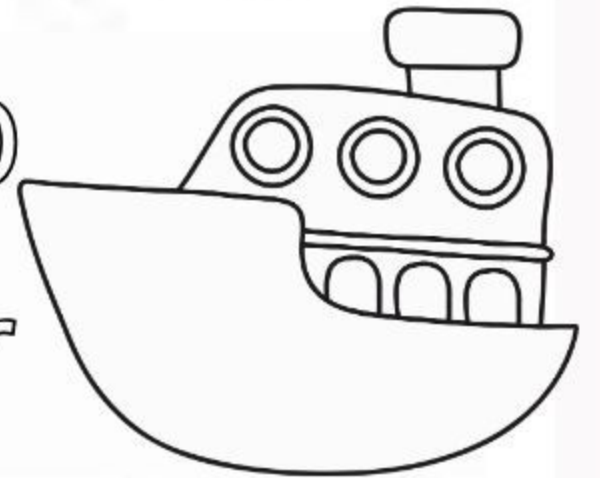
Chair  
Panda



Triangle  
Umbrella

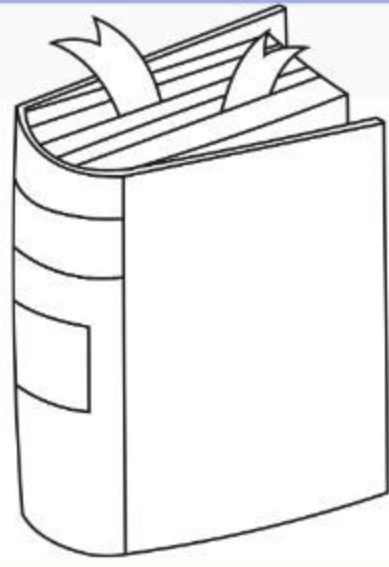


Ship  
Car

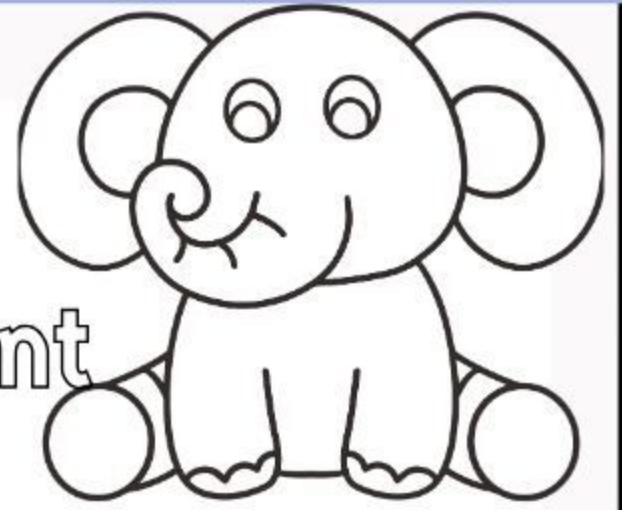


Color the picture & the right answer

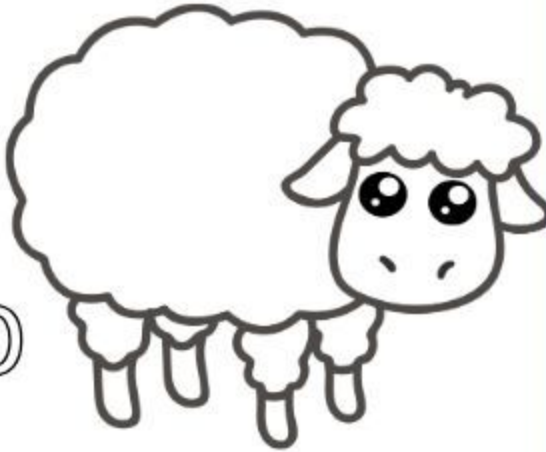
Fox  
Book



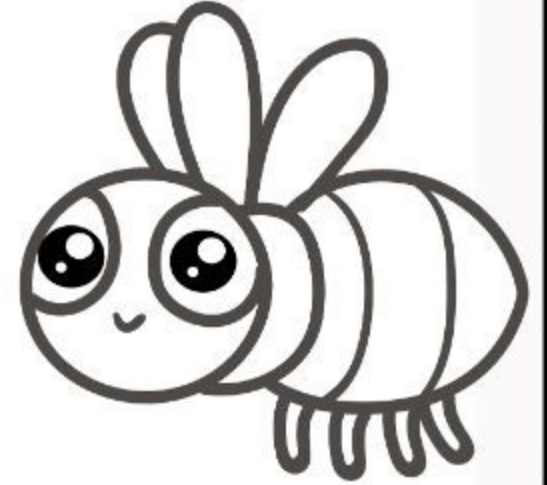
Hat  
Elephant



Yoyo  
Sheep



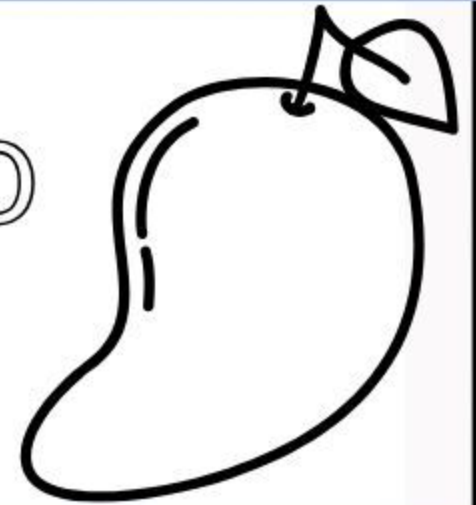
Bee  
Sun



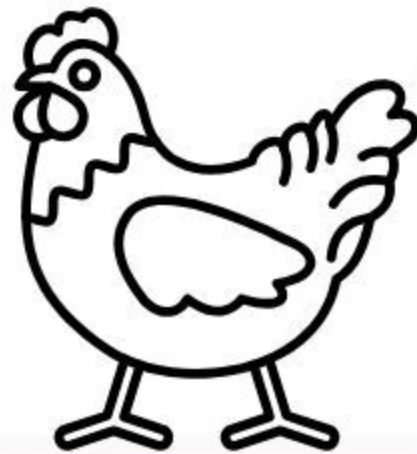
Girl  
Cat



Mango  
Fish



Soap  
Hen



Vase  
Car



SHREM ARTS

[www.shremarts.com](http://www.shremarts.com)

**Color picture & write answer**



----- cat



-----elephant



-----book



----- egg



----- ant



----- clock



----- girl



----- bag



-----apple



----- kite



----- banana



----- eye



**(a) or (an)**

he

she

I

is

they

am

It

You

are

we

Match





V D I U

---



C P S Q

---



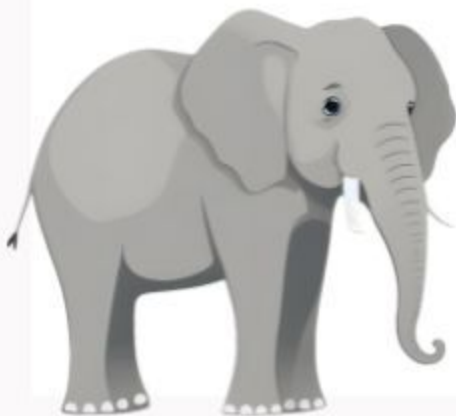
N M G O

---



R B T L

---



H F E A



**Draw a circle on the correct letter**